



Optimize the flow in your retail store

ASSA ABLOY

ASSA ABLOY Entrance Systems

The global leader in
door opening solutions

Table of contents

Choose the optimal door solution	2
Consider this	
Enjoy a pleasant indoor climate	3
Customer flow in and out of your store	
Open doors to customers, not just people passing by	
How to keep a pleasant indoor climate	
How to save energy	
Reliability that you can count on	6
Uptime, all the time	
Think ahead	
Maintain and service	
Enjoy safety and security	9
Safe shopping for your customers	
Safe work environment for your staff	
Protecting doors and customers alike	
Burglary protection	
Your optimal door solution	12
Find the solution	
See the benefits	
Different door solutions	
Automatic alternatives	

Choose the optimal door solution

A good door solution is all about convenience. It should improve operations, enhance the customer and staff experience and save energy as well as cost. There are many parameters to take into consideration and we will try to help you sort them out for you.

Consider this

There are many kinds of door solutions and you have to find what is best for you and most convenient for your customers and staff members. What you choose is highly dependent on space availability, traffic flow, compliance with local rules and regulations, as well as insurance policies.

A manual door is the most basic solution, but requires space to open. If you don't want to lose valuable floor space to accommodate the doors for the front, back and interior of your building, you might want to look into another solution.

It is important to support a flow of people or goods, especially during peak hours. A door that constantly has to be opened and closed become a serious traffic hiccup and, if left open, lets

wind and street noise into the store. In addition, you want a quiet entrance that doesn't disturb customers and staff.

An entrance is also a place that can present a safety concern. Especially the elderly and disabled benefit greatly from a door solution that opens in a timely manner and does not close too soon.

Ask the right questions

- How big is your sales floor?
- Is there a draft when two or more doors are open at the same time?
- Is there a busy flow of people outside your store?
- In which area is your staff most of the time?
- How do you move goods from the delivery vehicle?
- How do you move goods inside the store?
- How is the building protected at night?
- Do you have especially valuable goods?



**Enjoy a pleasant
indoor climate**

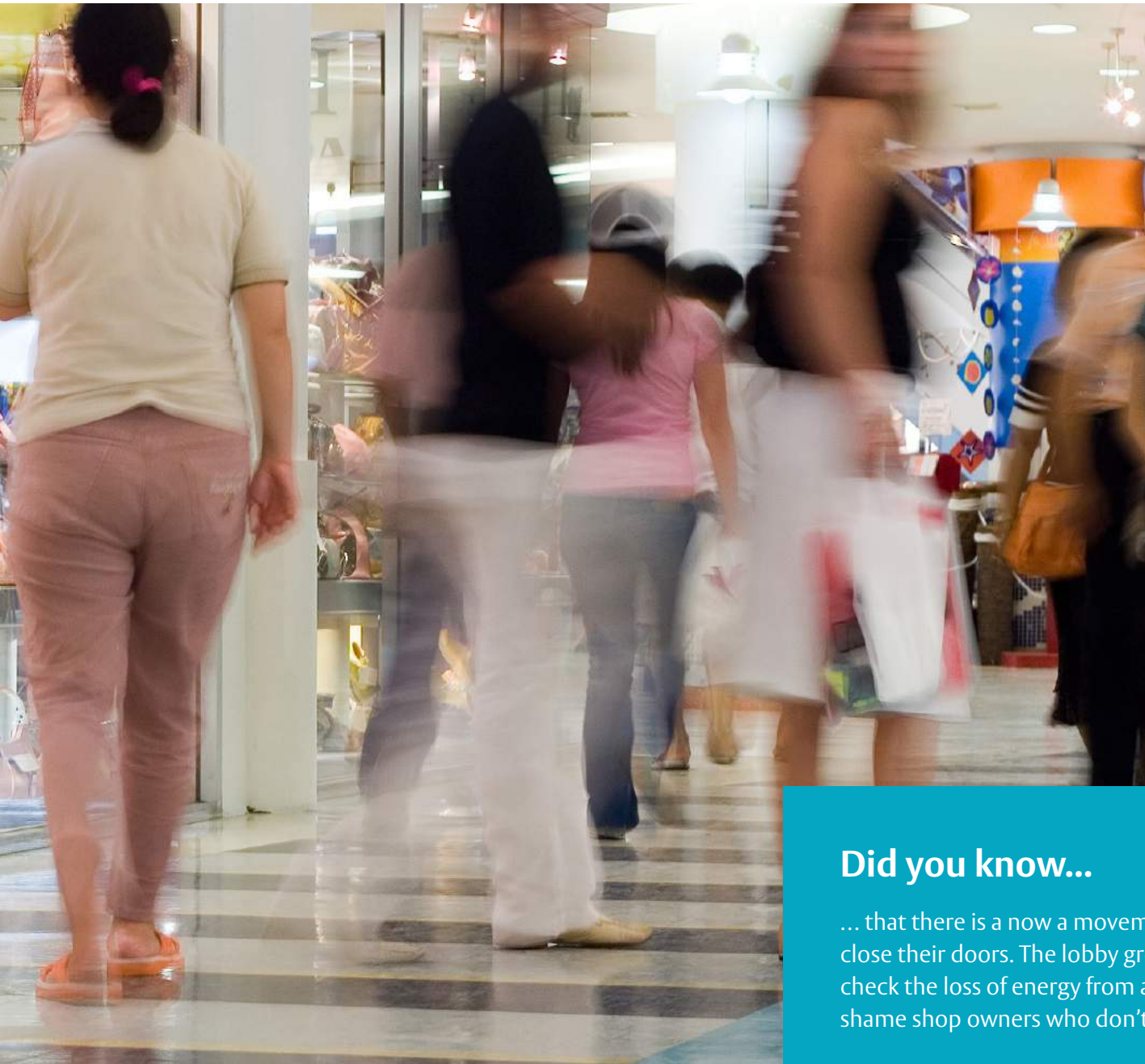
Customer flow in and out of your store

Customers expect automatic doors to open when they approach them. If you can accommodate the needs of many different kinds of customers – fast walkers, slow pedestrians, people with disabilities etc. – your store will provide a pleasant and welcoming atmosphere that can boost your business. Modern day entrance solutions include technology that makes this possible, such as sensors that adjust the speed of sliding doors.

Open doors to customers, not just people passing by

People are getting increasingly irritated with doors that are either opened wide at all times, or that open when they just happen to pass by. In addition, it affects the indoor climate negatively and this situation should be avoided. With proper research of your needs and the latest technology within the field, you can take the flow of people outside your store into consideration and adjust your solution to fit those needs.





How to keep a pleasant indoor climate

If customers feel comfortable in your store, they will also spend more time in there. However, even more important is to maintain the right temperature for your employees who spend their entire working day in the building. There are many solutions on the market that make certain that doors open and close only when needed. It is also possible to keep an even temperature in the store through air curtains.

How to save energy

A pleasant indoor climate, where the heating or cooling systems don't have to be regulated to switch between ever changing temperatures, has another benefit – energy and cost savings. With increasing prices on electricity and a rising interest from society for sustainable solutions, this is an important factor to take into consideration.

Did you know...

... that there is now a movement in the UK to get shop owners to open and close their doors. The lobby group "Close the door" uses thermal cameras to check the loss of energy from a building and a Twitter account to name and shame shop owners who don't have an energy-efficient door solution.



**Reliability that
you can count on**



”

Our customers expect an appealing store and the best from our staff and products. With reliable entrance solutions and maintenance programs, we are able to focus on our core business, ensure optimal convenience for all and increase our energy savings.”

John Andersen, Store Manager Denmark

Uptime, all the time

Customers want a pleasant and convenient shopping experience and it starts with a welcoming entrance. Your staff needs to be able to focus on the core part of your business and not have to deal with malfunctioning doors during the day. Whether you choose a manual or an automatic door solution, you need to be able to rely on your entrances working smoothly at all times, at the back, front and interior of the building.

Think ahead

- When you look at your store's layout and the different entrances throughout the building, try to plan for the future. If you want your entrances to work flawlessly for years to come, it is smart to choose high-quality doors with the possibility of expansion and modifications. There are several well-known brands whose doors will last a long time and operate without interruptions with regular maintenance.

Maintain and service

Naturally, a manual door solution requires only little service and will last for many years without any maintenance. However, you don't get any of the benefits of automatic doors, and the fact is that with regular maintenance of your entrances, you can enjoy reliable, safe and sustainable operations throughout their lifetime. Pro-active maintenance programs help you prevent unexpected problems.





**Enjoy safety
and security**

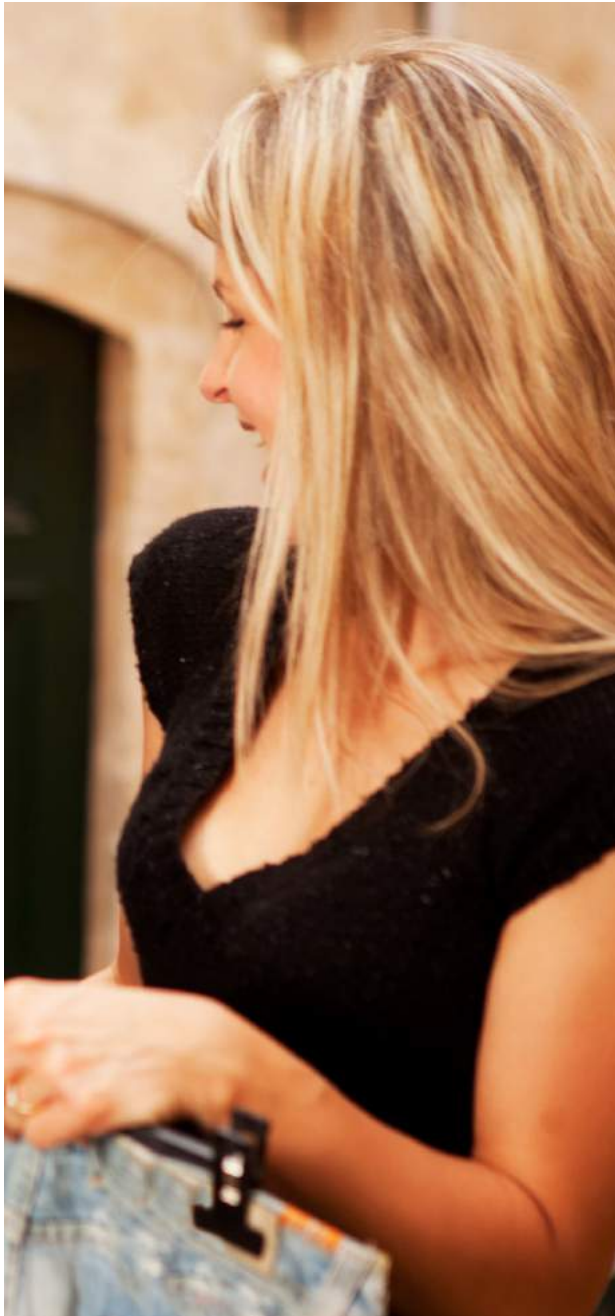
Safe shopping for your customers

If people in a modern society see a door without handles or doorknobs, they will expect it to open automatically and simply keep walking toward it. It is therefore of utmost importance that your automatic doors open and close at the appropriate time, i.e. when the customer approaches, and that it happens fast enough for the customer not having to stop and wait, but also slow enough that he or she might pass at a comfortable pace. Properly installed and regularly maintained store entrances are hardly noticed, but will increase the flow of people without compromising safety.

Safe work environment for your staff

Doors behind the scenes are just as important as your entrance solutions for customers. Busy staff should be able to move in the storage space, from one area to another, without having to open and close doors. A high-speed door, a docking solution and high-performance doors reduce heat exchange and improve the flow of goods.





Protecting doors and customers alike

You want to protect your doors and simultaneously make sure that your customers or staff cannot accidentally harm themselves while passing through. There are many solutions to this issue, from advanced scanners that take into consideration the speed at which individual customers approach the doors, to versions that simply open and close the door automatically. As a shop owner, you might also want to regulate how seasonal decorations are used. If they block the sensors of the automatic doors, you might run into problems with malfunctioning doors.

Burglary protection

It is important to keep your store secure and effectively protected from burglary outside opening hours. You do not want a fortress by day, but you do want to keep your store and the goods inside secure every night. The solutions must be simple to handle, since tedious and time-consuming procedures tend to be avoided. You should also pick locks and doors that follow Resistance Class certifications, such as RC2 and RC3, which are certified by a third party.





Your optimal
door solution



Find the solution

If your store is large and if there are many parameters to take into consideration, you might want to capture data from the existing installations to see how the doors and entrances can be improved and to be able to see how they perform after the upgrade. You might, for example, gather data on the number of sensor activations per hour and the amount of time the doors are spent in open/moving position per day.

See the benefits

There are a number of improvements that can be made with the right door solution. Some things are emotional, such as the shopping experience that your customers have, but some of them can be quantified, such as energy cost.

- Reduction in door open time (minutes per day)
- Cost of energy to heat HC
- Cost of energy to cool AC
- Total yearly saving for heating
- Total yearly saving for cooling
- Total global saving
- Yearly avoided pollution
- Total carbon saving



Different door solutions

Choose smart entrance solutions for the front, back and interior of your building and improve the flow of customers and goods. And by smart we mean solutions from a high-quality and well-known brand that will last a long time, operate without interruptions and that can easily be maintained and serviced.

Manual doors

Manual doors do not require electricity to operate. With a manual door, you can also inquire about installing your own security system. A manual entrance door brings you a greater choice in styles than you would with most electronic doors.

Automatic doors

Improve and secure accessibility, safety and convenience in any building. Sliding-, swing- or revolving doors welcome visitors, guide traffic and preserve indoor climate zones.

Modernize what is already there

Do you have an outdated door solution? Or do you have a door that was of poor quality from the beginning? You can fairly quickly and easily update and modernize existing installations with modernization kits and a service agreement. Even the simplest door opener can make life more convenient for your customers and staff.

Automatic alternatives

Automatic entrances are the most convenient solutions for both your customers and your staff. They open and close only when they need to, making them more energy-efficient. You will not have to worry about doors being left open by accident, interfering with your AC. Customers and staff are let in and out of the building giving everyone fair access to your facility. For shoppers, automatic doors are also convenient when leaving with a large amount of purchases. For employees, it is easier to move goods around.

Additional equipment

With tight seals it is possible to control air flow, reducing cost for heating and cooling. ECO radar and safety sensors make certain that the door only opens wide enough for people to be able to pass through comfortably, while preventing unnecessary energy loss.

Swing door systems

- Come in a variety of configurations, from a single door that swings in or out to a pair of doors that simultaneously swing in the same direction.
- The door operator can be concealed.
- It is possible to choose from a variety of designs: center-pivoted, offset-hung, balanced or hinged.
- Can also feature sensors or control mats and safety signage.



Sliding doors

- Flat panels that slide horizontally and linearly, with a variety of configurations.
- Features are similar to the ones described for swinging automatic doors.
- Include sensors or control mats as well as safety signage.



Revolving doors

- Can be used as an airlock to minimize a building's heating and air conditioning losses.
- Allow for better control of the interior environment when compared to manual doors.
- With a revolving door, the air can flow freely between the conditioned (inside) and unconditioned space (outside). Keeps in the cooled air in hot climates.



Cold room doors

- Developed specifically for the food industry
- Offer lower energy-losses for high-traffic cold areas



High speed doors

- Open and close very fast, offering a very high degree of efficiency.
- Separate conflicting areas
- These are space-saving doors for moderate traffic



Overhead sectional doors

- A vital component in the movement of goods into and out of working and commercial facilities.
- A wide range of accessories can be added for added convenience and safety.
- Insulated panel doors offer maximum thermal insulation and weather protection for warehouses, distribution centers and workshop type facilities.



ASSA ABLOY Entrance Systems

ASSA ABLOY Entrance Systems is a leading supplier of entrance automation solutions for efficient flow of goods and people. We offer products and services dedicated to satisfying end-user needs for safe, secure, convenient and sustainable operations.
ASSA ABLOY Entrance Systems is a division within ASSA ABLOY.

ASSA ABLOY

The global leader in
door opening solutions