

# Dock leveler

## ASSA ABLOY DL6120ST

**ASSA ABLOY**  
Entrance Systems

Experience a safer  
and more open world



### The efficient and safe docking process

The ASSA ABLOY DL6120ST stepdock is a dock leveler that provides increased efficiency and safety for the docking process. Unlike conventional docking systems, the dock leveler is placed behind a well-insulated sectional door. In closed position, it is very well sealed off from below, preventing cold or hot air access.

The design was specifically developed to let a truck dock to the loading bay with closed rear doors. First the truck is put in the right position and then preferably an inflatable dock shelter seals off the loading bay before the sectional door is opened. The last step of the complete dock-in procedure is that the rear doors of the truck are opened. This sequence "dock first – open the rear doors later" provides a number of benefits: saving of energy, improving working conditions in particular for the truck driver, increasing safety of people / goods, and improving the efficiency of the docking process.

#### Ideal solution for various applications:

- Hygienic transport with high focus on safety.
- Food logistic demanding the unbroken cold chain.
- Container transport with customs purposes.
- High attention on theft prevention.

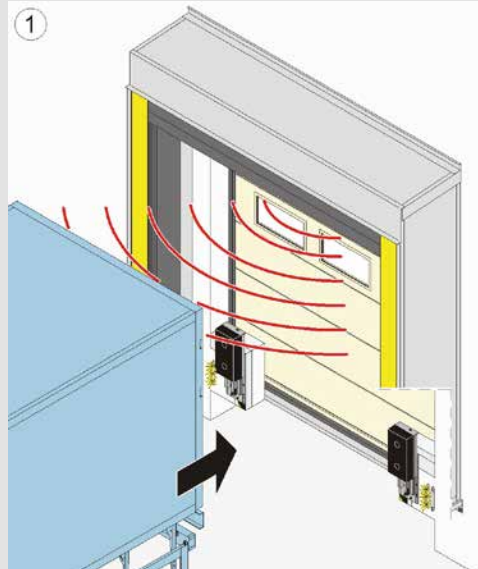
#### ASSA ABLOY 950 series - the intelligent, all in one, docking control system

The innovative and unique 950 series docking control system gives you direct control of the dock leveler, dock shelter and door all in one control unit. With only a few self explaining buttons it is easy to operate, to meet the demands of modern logistics. Separate steering units or complex wiring are no longer needed.

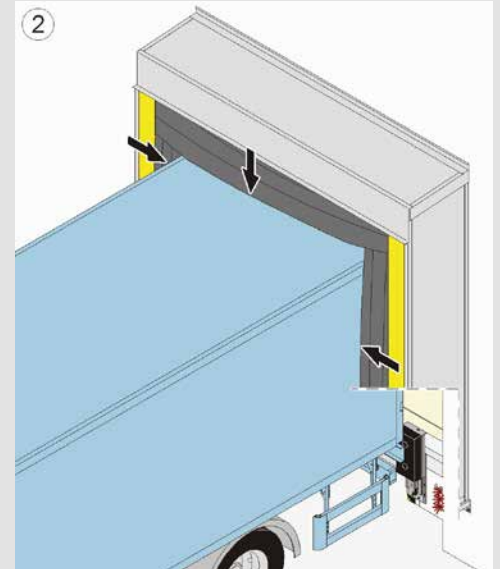
### Technical Data

Nominal length	2500, 3000 mm
Nominal width	2000, 2200 mm
Load capacity	60 kN (6 tonnes)
Vertical working range	
Rise above dock	up to 420 mm
Fall below dock	down to 450 mm
Platform tear-plate thickness	8/10 mm
Max. point load leveler platform	6,5 N / mm <sup>2</sup> (8 mm tear plate)
Lip type and length	telescopic, 1000 mm
Lip material	steel or aluminium
Control unit protection class	IP 54
Temperature range hydraulic oil	-20°C - +60°C
European standard	EN 1398 Dock levelers

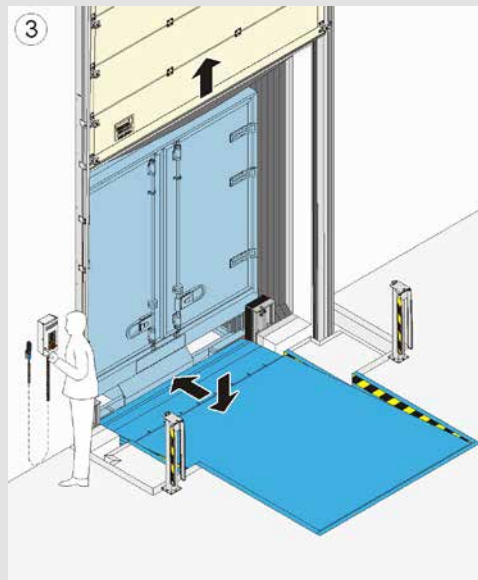
# Loading operation



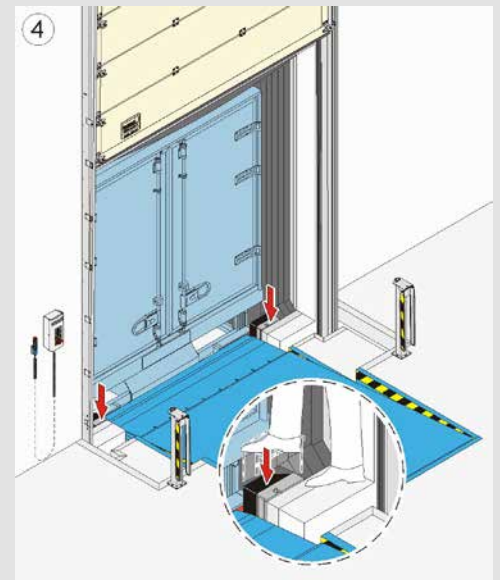
1 The truck reverses backward to the dock.



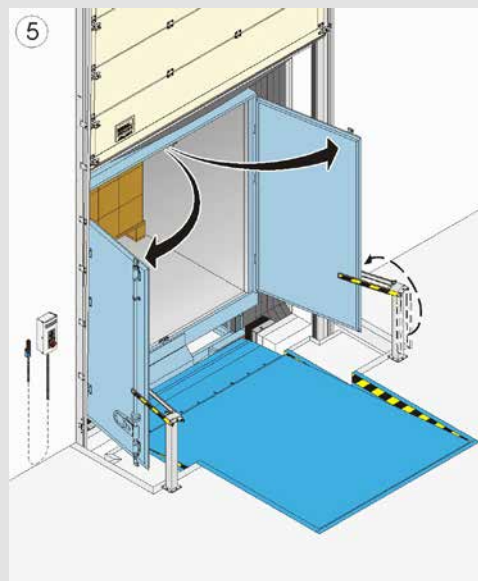
2 The dock shelter is inflated around the docked vehicle, providing best possible sealing.



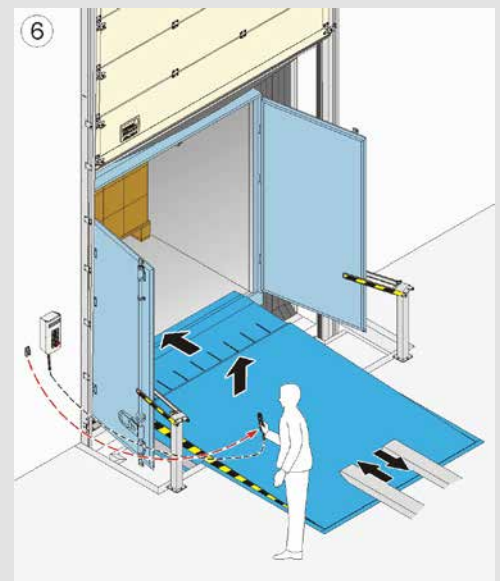
3 The sectional door is opened and the telescopic lip of the dock leveler is positioned to close the gap between the vehicle and the building.



4 The height adjustable buffers are moved down and locked in the lowest position.



5 The rear truck doors are opened over the step and secured by the truck door blockers.



6 The dock leveler is connected with the vehicle to allow the loading operation to begin.