

Docking drawbridge

ASSA ABLOY DB6050SKB

ASSA ABLOY

ASSA ABLOY Entrance Systems

The global leader in door opening solutions



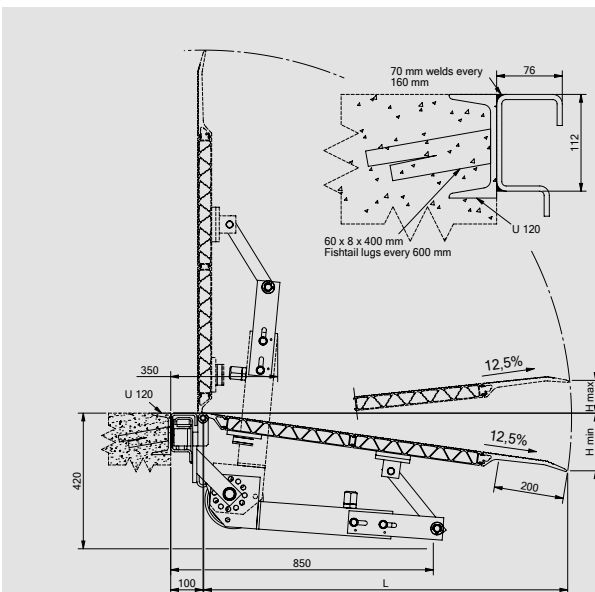
Large range fixed or movable drawbridge leveler

The ASSA ABLOY DB6050SKB drawbridge leveler can be installed in two different ways. It is either fixed in position by welding directly to a solid steel profile in the dock edge or movable sideways in a guide rail. It is the flexible solution for external applications for the medium working range up to about 200 mm level equalization. The outstanding feature is the quick and easy handling.

The high-tensile light metal allows weights up to 40 kN. The ASSA ABLOY DB6050SKB drawbridge leveler complies with the European EN 1398 standard.

Feature and benefits:

- Non slip surface for safe transshipment of goods
- Easy to keep clean
- Robust and maintenance free
- Easy Handling and flexible positioning



SKB movable with spring system

Type	Order Number	Length (L)	Width (B)	Height Difference (H)		Load Cap (kgs/ea)	Weight (kgs/ea)
				min.	max.		
Movable model							
SKBS 01	304.21.000	815	1250	- 120	+ 80	4000	67
SKBS 02*	304.21.001	1315	1250	- 185	+ 140	2500	102
SKBS 03*	304.21.002	1565	1250	- 215	+ 175	1750	113
SKBS 10	304.21.003	565	1500	- 90	+ 50	4000	67
SKBS 11	304.21.004	815	1500	- 120	+ 80	4000	77
SKBS 12*	304.21.005	1065	1500	- 155	+ 110	4000	103
SKBS 13*	304.21.006	1315	1500	- 185	+ 140	4000	114
SKBS 14*	304.21.007	1565	1500	- 215	+ 175	4000	128
* Model with spring system							(kg/m)
	319.22.002	Guide rail unpainted 2000/3000 mm long					12
	319.23.007	Guide rail galvanised 2000/3000 mm long					12