

	A (HP)
Standard (Telescopic L=230)	0-100
Extension (Telescopic L=345)	100-215
Extension (2x Telescopic L=230+Joint part)	215-305

**STATE WHEN ORDERING**

- Surface treatment**
- Silver anodized
  - Special anodized .....
  - RAL .....
  - Special powder coating .....

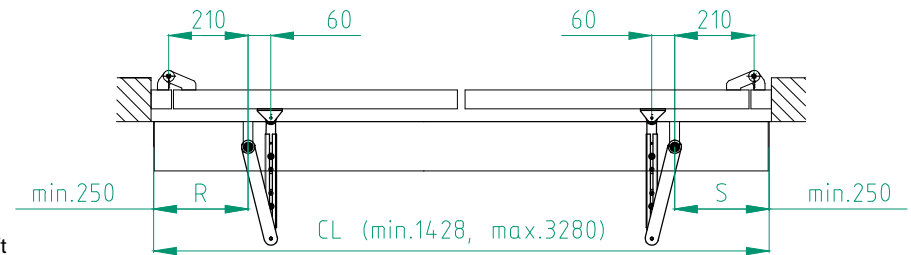
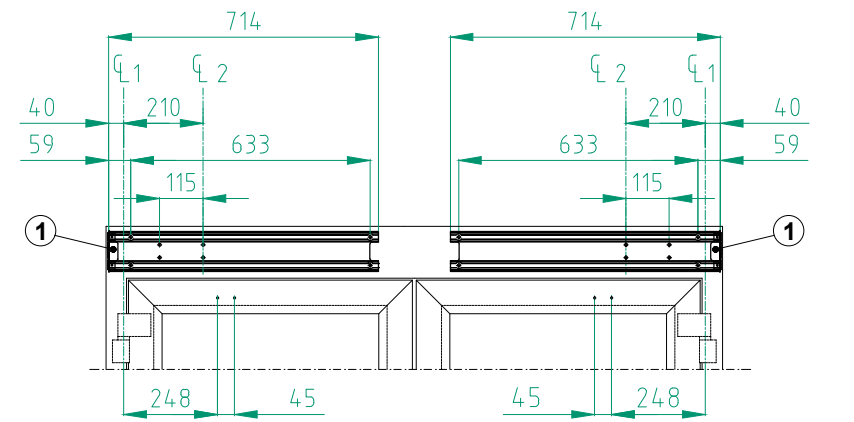
- Cover end plates**
- BK
  - SI

Options see layers:  
 Modular

CL = ..... mm  
 R = ..... mm  
 S = ..... mm  
 If R and S are set to "0", no cutouts will be made.

- ⌀1 Hinges
- ⌀2 Operator drive shaft
- 1 Cable inlet
- 2 Reinforcements required in door leaf and at fixing holes

X	Y	Shaft extension
0-14	48	0
15-35	68	20
36-65	98	50
66-86	118	70



Customer: \_\_\_\_\_

Door id: \_\_\_\_\_

Project No: \_\_\_\_\_

Ref: \_\_\_\_\_

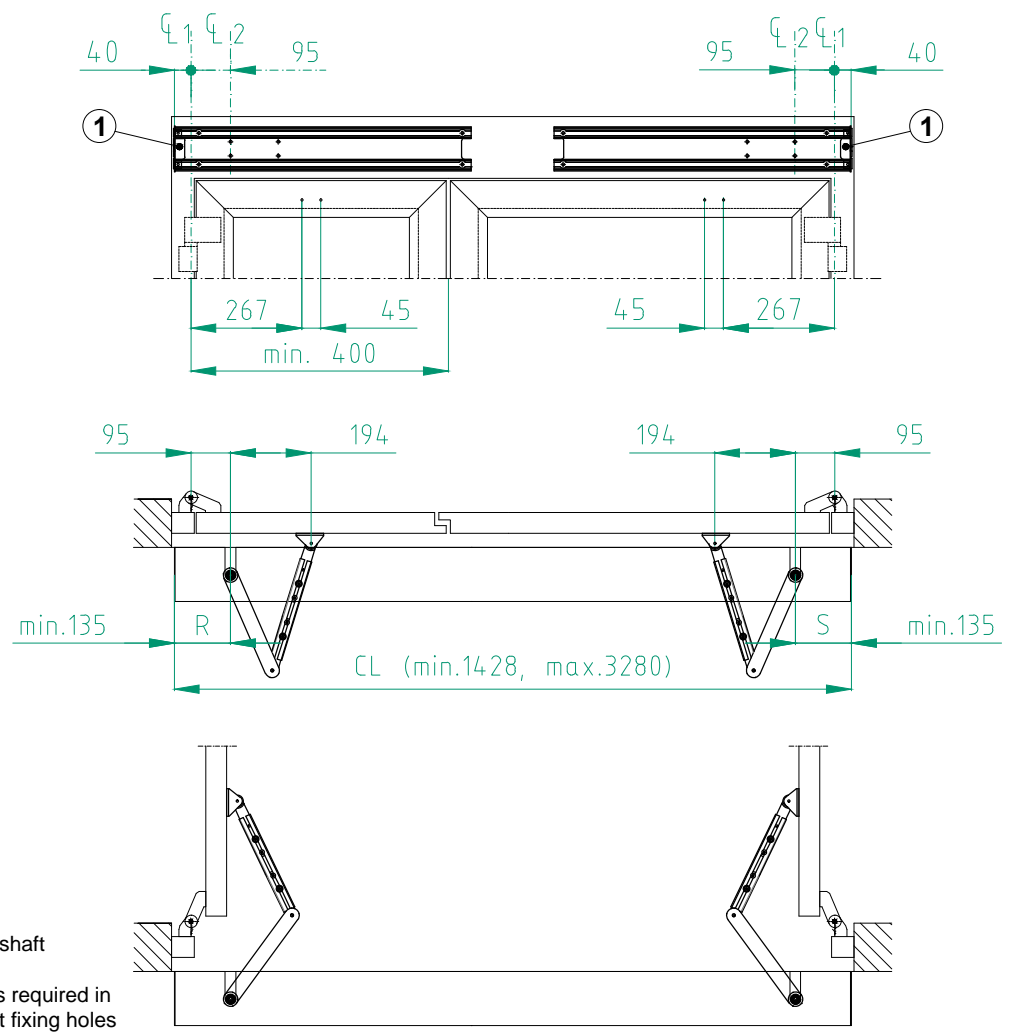
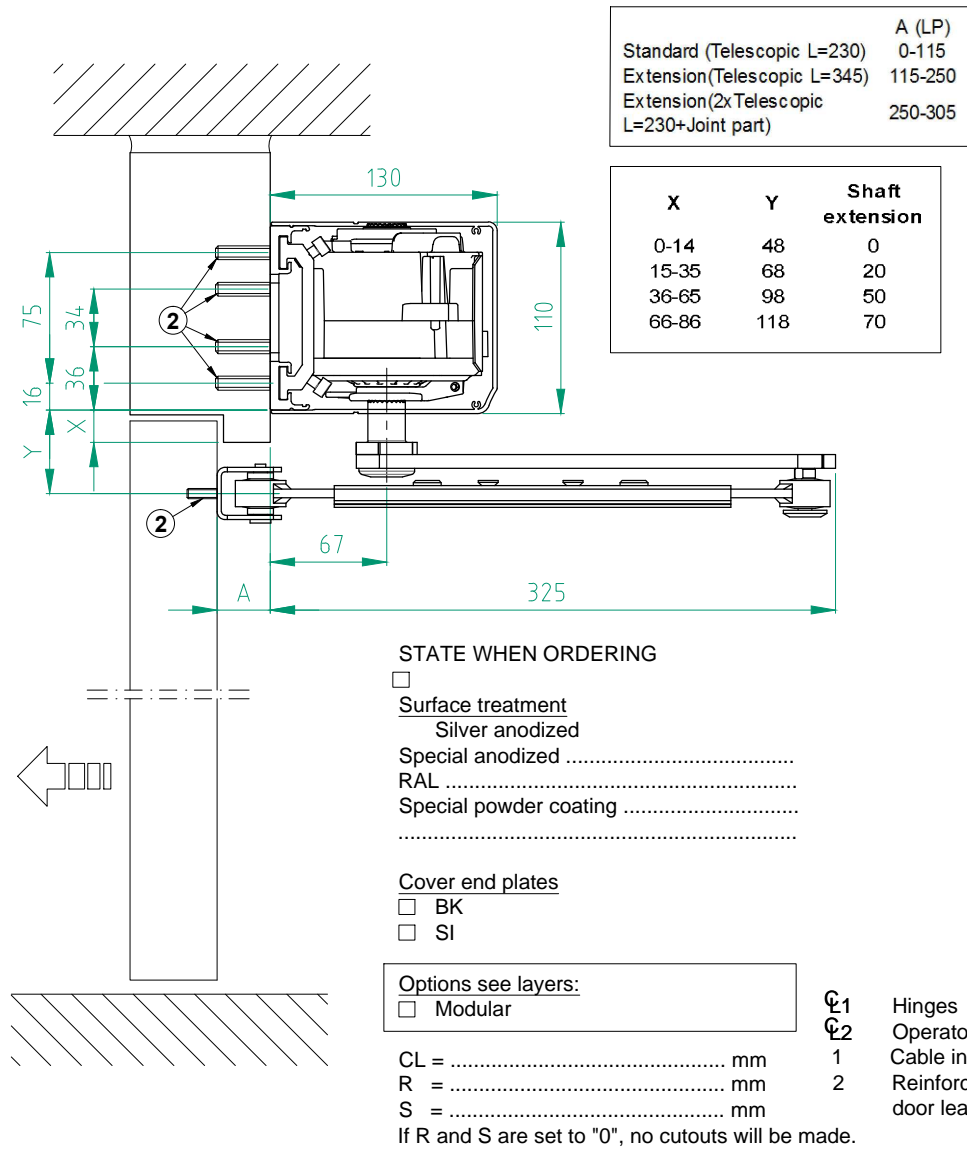
Date: \_\_\_\_\_

Sign: \_\_\_\_\_

Swing door operator  
 ASSA ABLOY SW200-2, PUSH  
 High Performance  
 Art. No. 1009942

**ASSA ABLOY**

7.0 1009942-en



Customer: \_\_\_\_\_

Door id: \_\_\_\_\_

Project No: \_\_\_\_\_

Ref: \_\_\_\_\_

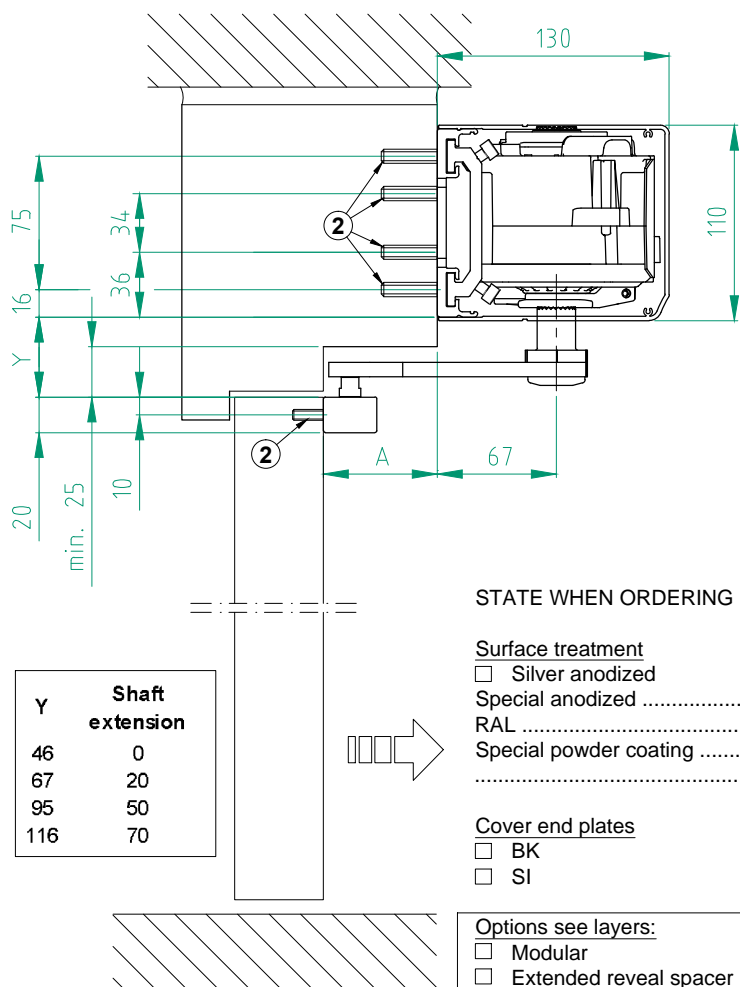
Date: \_\_\_\_\_

Sign: \_\_\_\_\_

Swing door operator  
 ASSA ABLOY SW200-2, PUSH Narrow Door  
 LE Performance  
 Art. No. 1009942

**ASSA ABLOY**

7.0 1009942-en



Y	Shaft extension
46	0
67	20
95	50
116	70

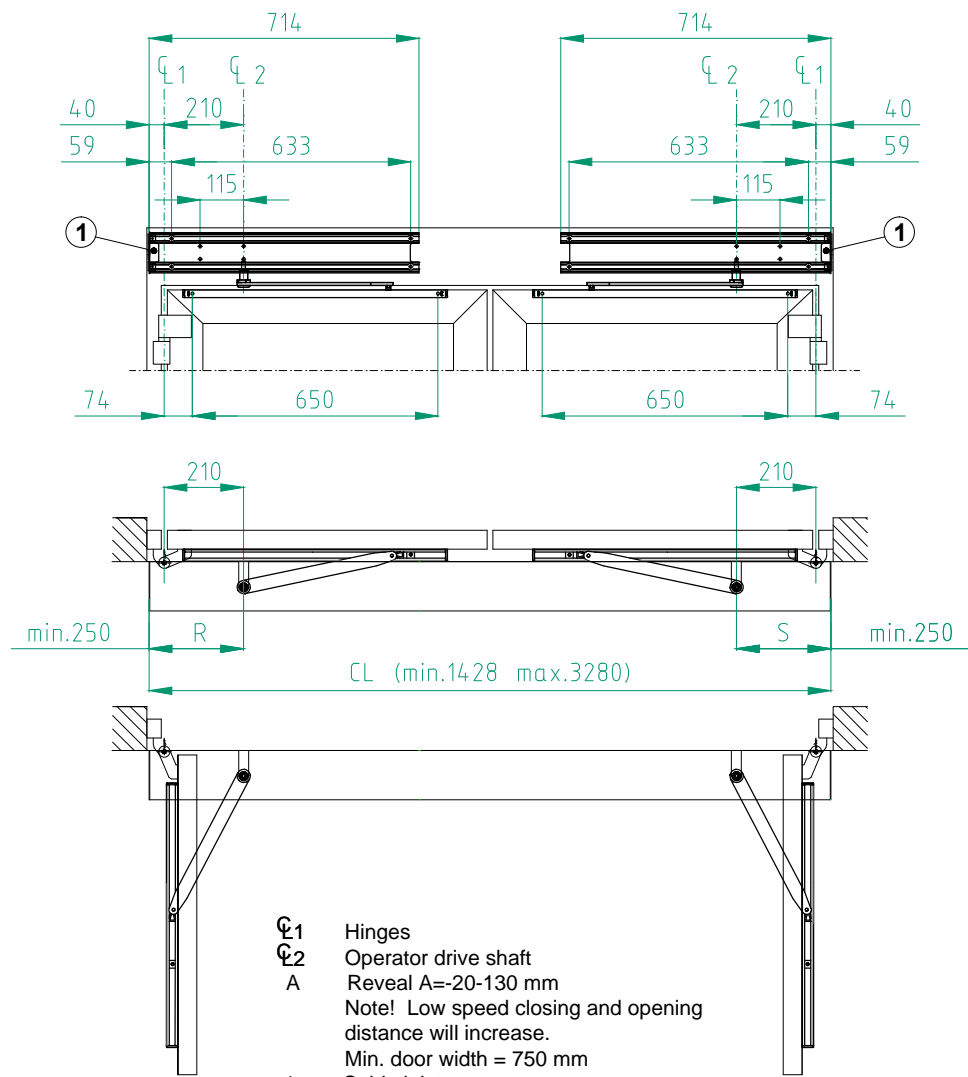
**STATE WHEN ORDERING**

- Surface treatment**
- Silver anodized
  - Special anodized .....
  - RAL .....
  - Special powder coating .....
  - .....

- Cover end plates**
- BK
  - SI

- Options see layers:**
- Modular
  - Extended reveal spacer

CL = ..... mm  
 R = ..... mm  
 S = ..... mm  
 If R and S are set to "0", no cutouts will be made.



- CL1 Hinges
- CL2 Operator drive shaft
- A Reveal A=20-130 mm
- Note! Low speed closing and opening distance will increase.
- Min. door width = 750 mm
- 1 Cable inlet
- 2 Reinforcements required in door leaf and at fixing holes

Customer: \_\_\_\_\_

Door id: \_\_\_\_\_

Project No: \_\_\_\_\_

Ref: \_\_\_\_\_

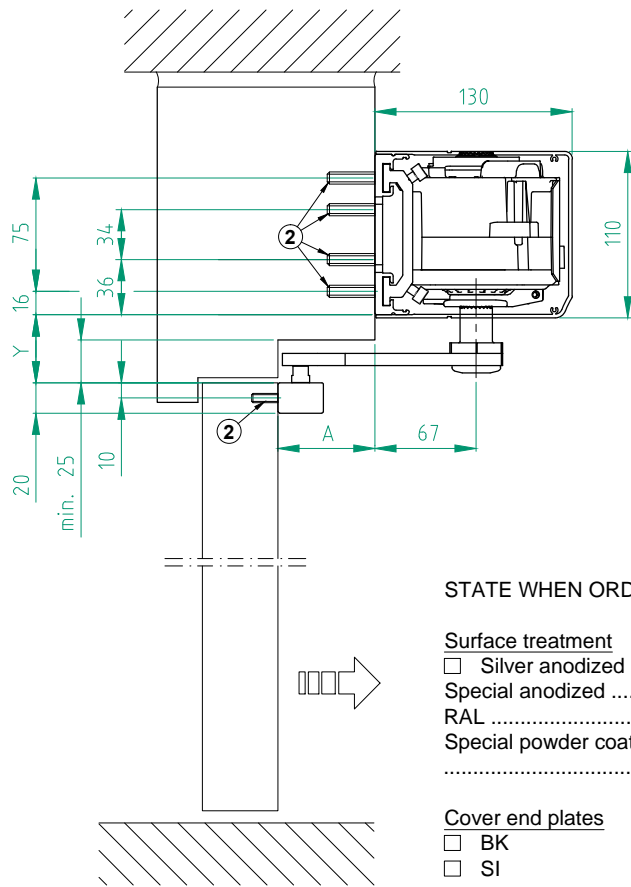
Date: \_\_\_\_\_

Sign: \_\_\_\_\_

**Swing door operator**  
 ASSA ABLOY SW200-2, PULL  
 High Performance  
 Art. No. 1009942

**ASSA ABLOY**

7.0 1009942-en



**STATE WHEN ORDERING**

**Surface treatment**

- Silver anodized
- Special anodized .....
- RAL .....
- Special powder coating .....

**Cover end plates**

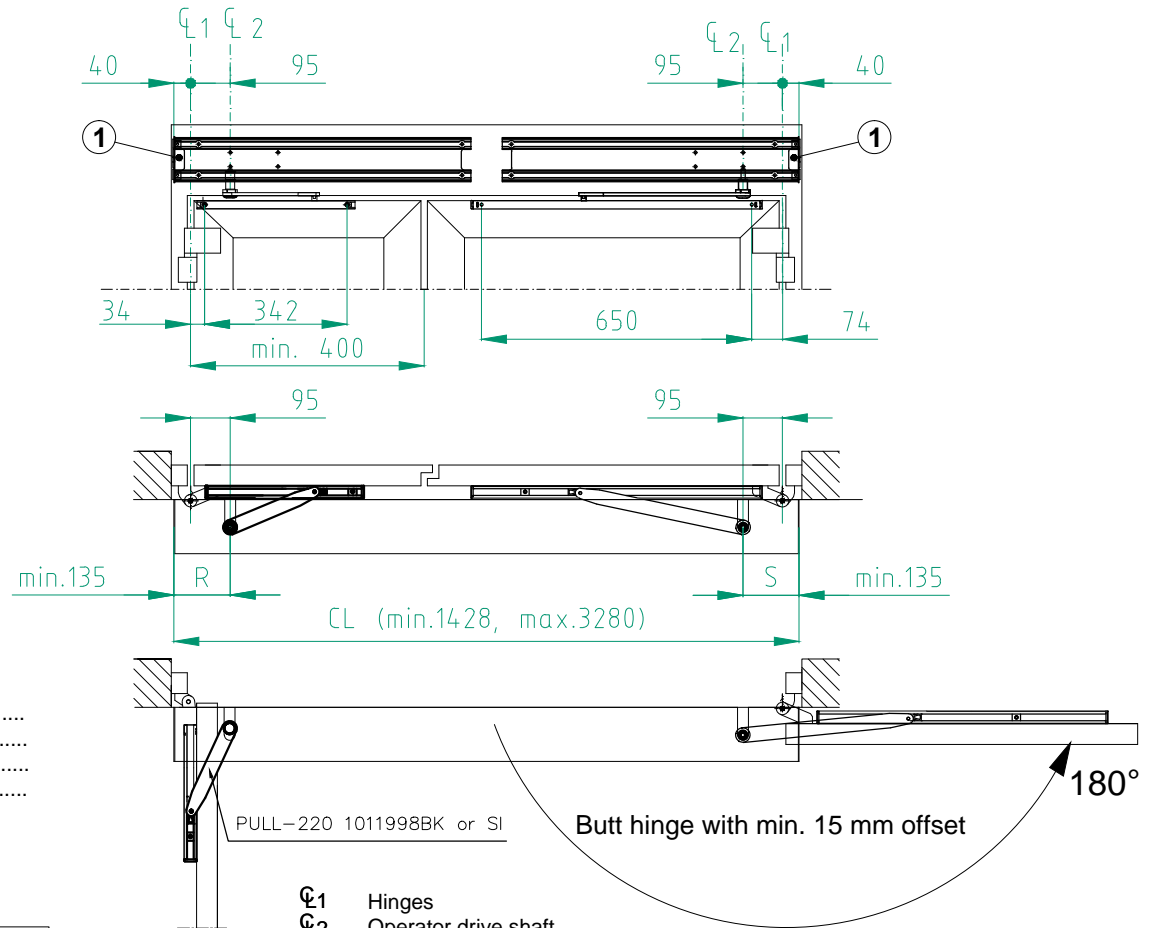
- BK
- SI

**Options see layers:**

- Modular
- Extended reveal spacer

CL = ..... mm  
 R = ..... mm  
 S = ..... mm  
 If R and S are set to "0", no cutouts will be made.

Y	Shaft extension
46	0
67	20
95	50
116	70



- Ø1 Hinges
- Ø2 Operator drive shaft
- A Reveal A=-20-65 mm
- Note! Low speed closing and opening distance will increase.
- Max. door opening = 180°
- Min. door width = 450 mm (PULL-220)
- Min. door width = 750 mm (PULL)
- 1 Cable inlet
- 2 Reinforcements required in door leaf and at fixing holes

Customer: \_\_\_\_\_

Door id: \_\_\_\_\_

Project No: \_\_\_\_\_

Ref: \_\_\_\_\_

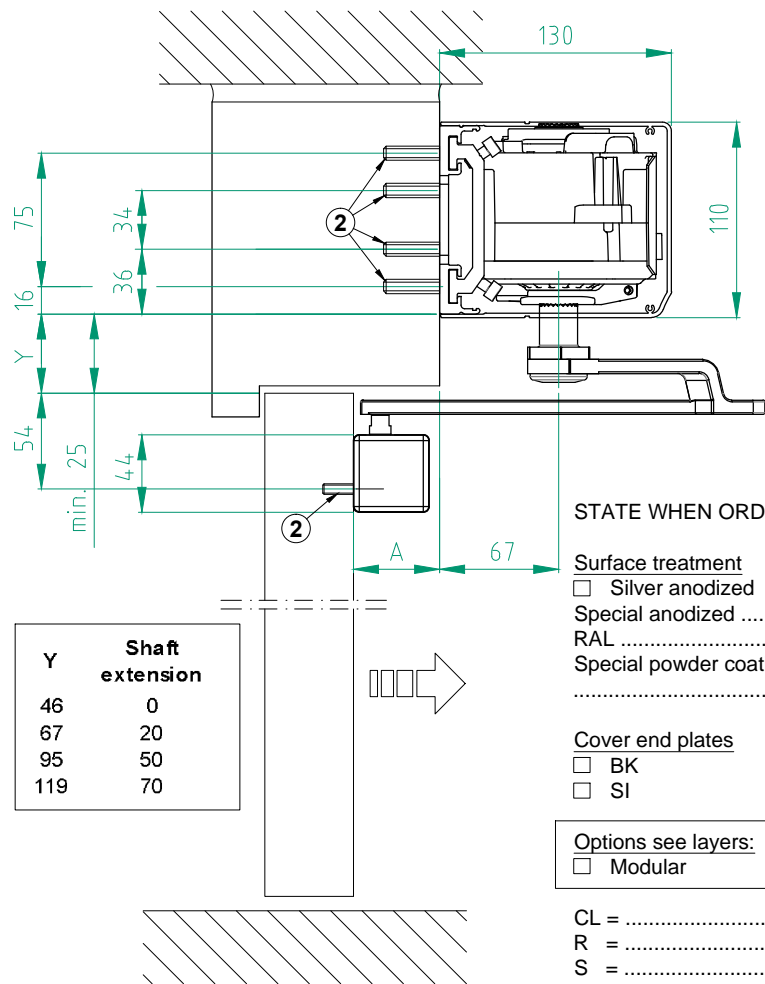
Date: \_\_\_\_\_

Sign: \_\_\_\_\_

Swing door operator  
 ASSA ABLOY SW200-2, PULL Narrow Door  
 LE Performance  
 Art. No. 1009942

**ASSA ABLOY**

7.0 1009942-en



**STATE WHEN ORDERING**

- Surface treatment  
 Silver anodized  
 Special anodized .....  
 RAL .....  
 Special powder coating .....  
 .....

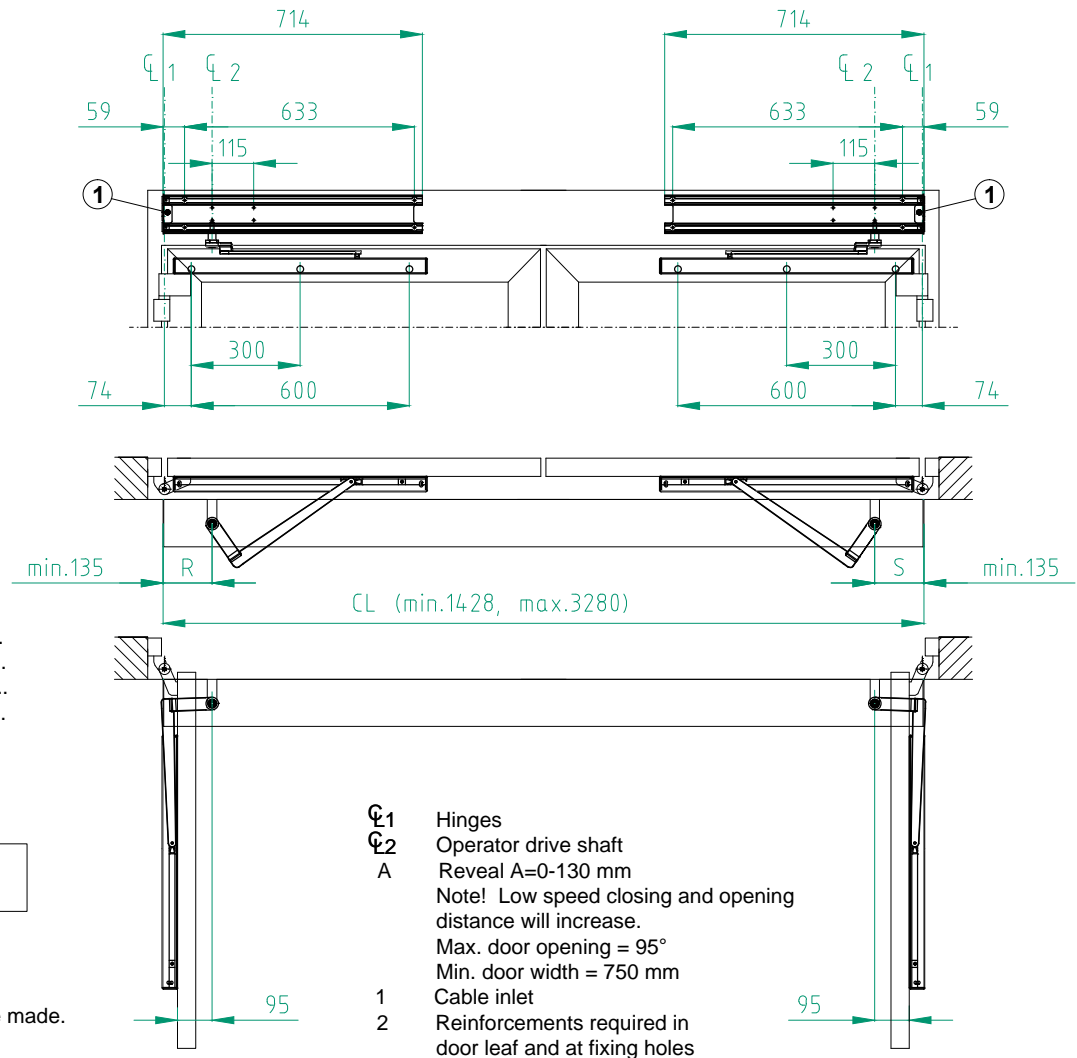
**Cover end plates**

- BK  
 SI

**Options see layers:**

- Modular

CL = ..... mm  
 R = ..... mm  
 S = ..... mm  
 If R and S are set to "0", no cutouts will be made.

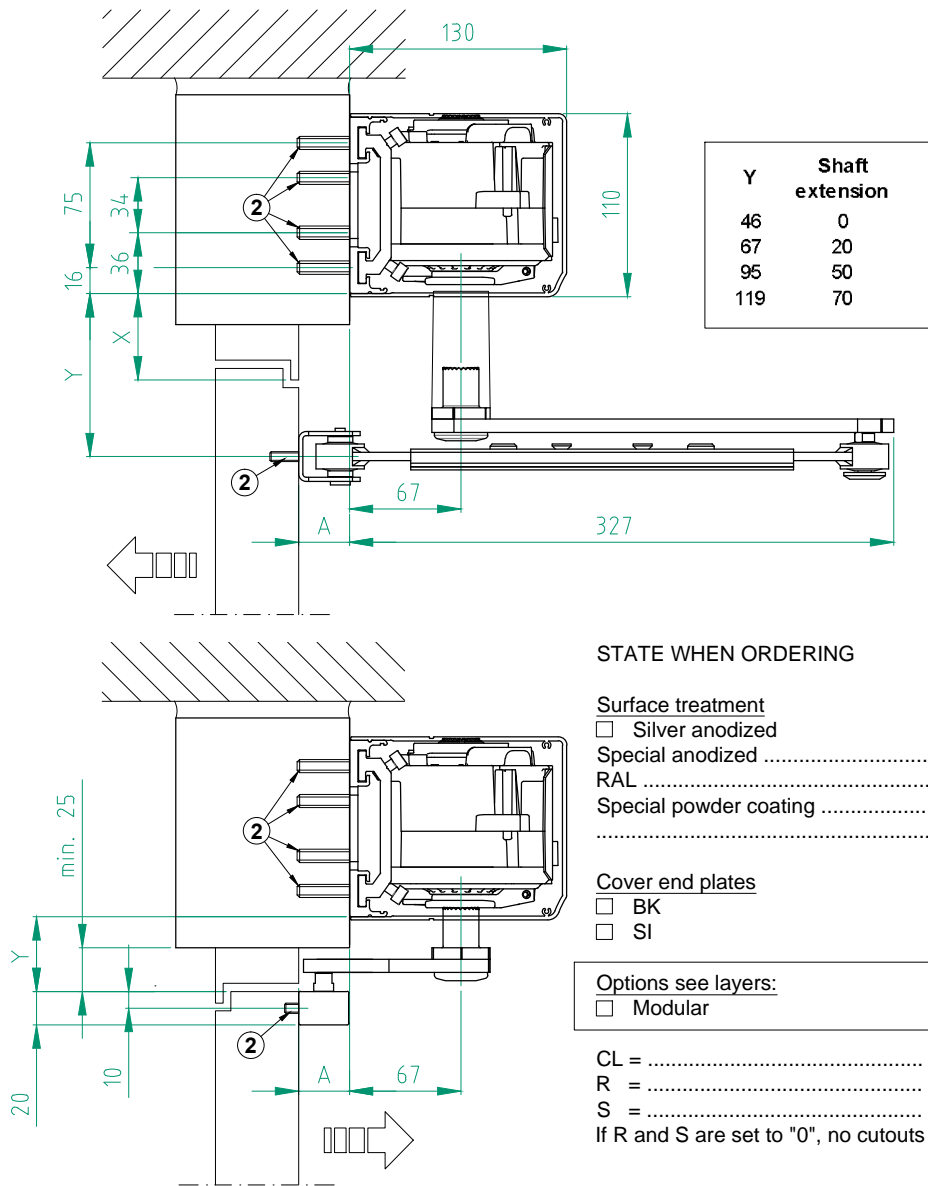


Customer: \_\_\_\_\_  
 Door id: \_\_\_\_\_  
 Project No: \_\_\_\_\_

Ref: \_\_\_\_\_  
 Date: \_\_\_\_\_  
 Sign: \_\_\_\_\_

Swing door operator  
 ASSA ABLOY SW200-2, PAS  
 LE Performance  
 Art. No. 1009942

**ASSA ABLOY**  
 7.0 1009942-en



Y	Shaft extension
46	0
67	20
95	50
119	70

**STATE WHEN ORDERING**

- Surface treatment**
- Silver anodized
  - Special anodized .....
  - RAL .....
  - Special powder coating .....

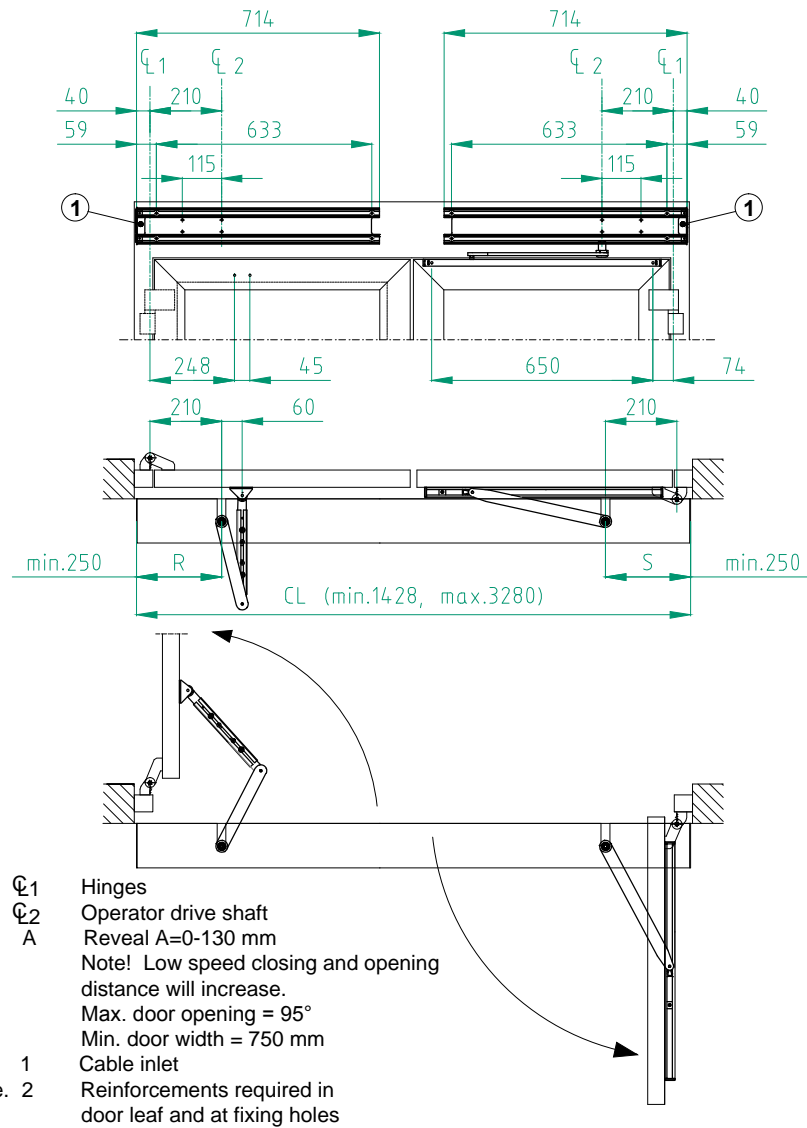
**Cover end plates**

- BK
- SI

**Options see layers:**

- Modular

CL = ..... mm  
 R = ..... mm  
 S = ..... mm  
 If R and S are set to "0", no cutouts will be made. 2



- ⌀1 Hinges
- ⌀2 Operator drive shaft
- A Reveal A=0-130 mm
- Note! Low speed closing and opening distance will increase.
- Max. door opening = 95°
- Min. door width = 750 mm
- 1 Cable inlet
- 2 Reinforcements required in door leaf and at fixing holes

Customer: \_\_\_\_\_

Door id: \_\_\_\_\_

Project No: \_\_\_\_\_

Ref: \_\_\_\_\_

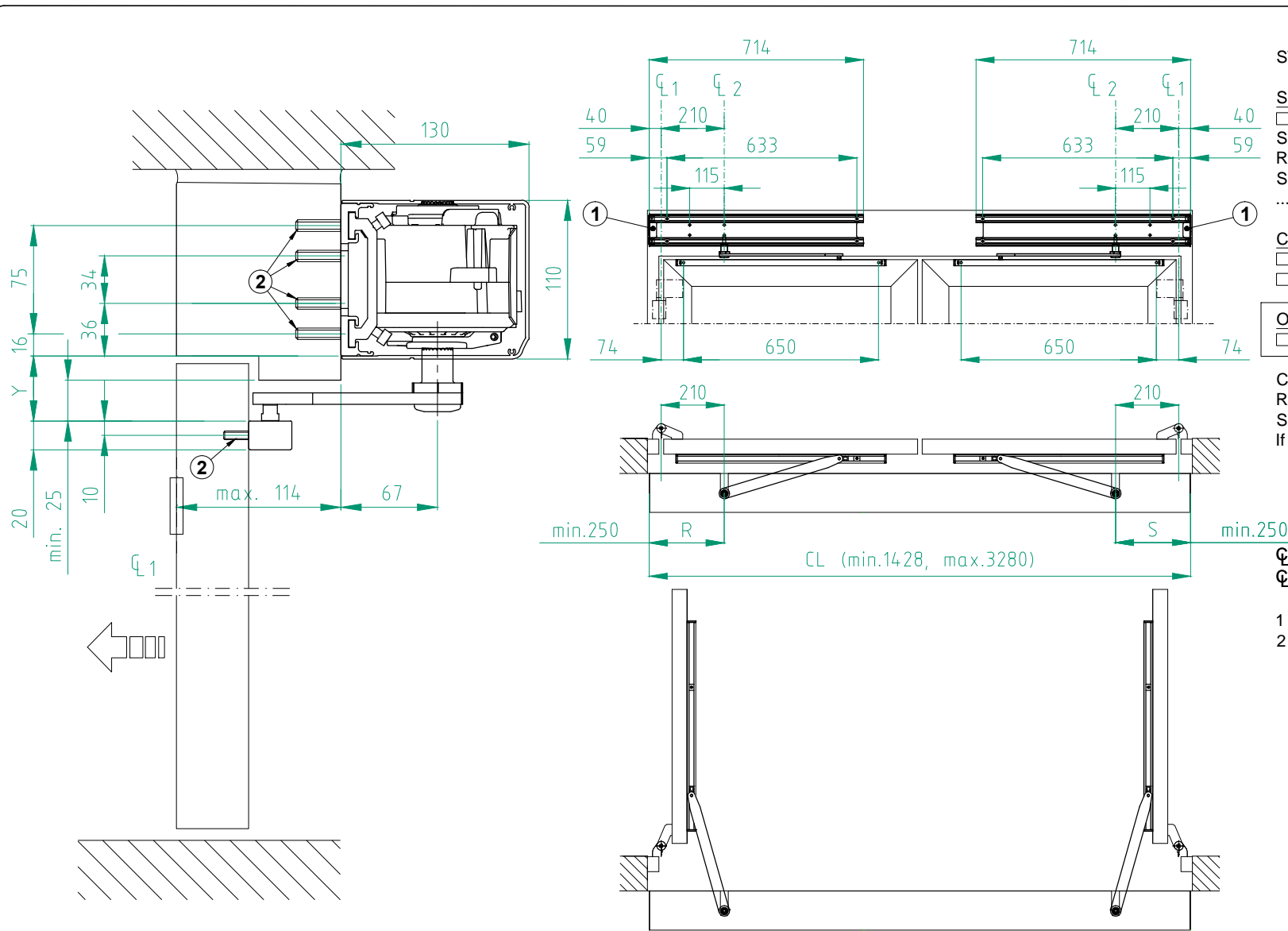
Date: \_\_\_\_\_

Sign: \_\_\_\_\_

**Swing door operator**  
**ASSA ABLOY SW200-2, PUSH+PULL**  
 High Performance  
 Art. No. 1009942

**ASSA ABLOY**

7.0 1009942-en



**STATE WHEN ORDERING**

- Surface treatment**
- Silver anodized
  - Special anodized .....
  - RAL .....
  - Special powder coating .....
  - .....

- Cover end plates**
- BK
  - SI

- Options see layers:**
- Modular

CL = ..... mm  
 R = ..... mm  
 S = ..... mm  
 If R and S are set to "0", no cutouts will be made.

- CL1 Hinges
- CL2 Operator drive shaft
- Min. door width = 750 mm
- 1 Cable inlet
- 2 Reinforcements required in door leaf and at fixing holes

Y	Shaft extension
46	0
67	20
95	50
116	70

Customer: \_\_\_\_\_

Door id: \_\_\_\_\_

Project No: \_\_\_\_\_

Ref: \_\_\_\_\_

Date: \_\_\_\_\_

Sign: \_\_\_\_\_

**Swing door operator**  
 ASSA ABLOY SW200-2, Sliding PUSH  
 High Performance  
 Art. No. 1009942

**ASSA ABLOY**

7.0 1009942-en