

# High-Performance Door

## ASSA ABLOY RR300 Plus

**ASSA ABLOY**  
Entrance Systems

Experience a safer  
and more open world





### AESTHETICS

Space saving design enables installation into door openings with restricted space.

### COUNTERBALANCE

The door comes standard with a counterbalance. This enables manual activation.

### KNOCK-OUT CAPABILITY

In the event of a collision the bottom profile breaks away, causing a sensor to stop the door. The door can then be easily reset by hand.

# High-Performance Door **ASSA ABLOY RR300 Plus**

## Advantages of the door

- Space saving design enables installation into door openings with restricted space.
- Door curtain is constructed with transparent PVC and reinforcement stripes. Chemical and puncture resistant RollTex® fabric is available for more demanding applications (optional).
- Integrated counterbalance allows self-opening without power supply.
- The door curtain is equipped with special wind tabs that travel in the side frame guides and give the door significant wind resistance.

## Design

### Door Material

The door (side frame, top roll cover and bottom profile) is made from aluminium or stainless steel.

### Door Curtain

The door comes standard with a transparent PVC curtain with blue reinforcement stripes.

In situations, for example, where more leakage protection is necessary, durable curtains made of RollTex or Normatex are available. Silicone-free curtains are also available.

### Windows

The curtains are available with or without windows as well as reinforcement stripes.

### Drive Unit

The door is equipped with a gear motor, available on the left or right hand side.

### Control System

The door is equipped with a frequency converter control system MCC. The powerful MCC frequency converter control system with Torque Vectoring of the drive unit, connected to the wide range of functions, enables nearly an unlimited use of the door. The MCC guarantees a soft start, optimal increase in speed, maximum speeds and a long service life of the door.

### Actuators

Specific application may require additional safety devices. Actuators, such as infrared, radar detectors, push buttons, vehicle detector loops or radio transmitters can be added to the control system. Please contact us for more information regarding your specific needs.

### Motor Cover and Top Roll Cover

A motor cover or top roll cover are optional door features.

### Integrated Cable Chain

The door comes standard with an internal cable routing to the bottom profil.

### Opening the Door

Manual activation: the door can be opened by manually releasing the brake on the balancing system. One manual release hand lever on the side column of the motor side is included as standard and a second one is available as an option. Alternatively automatic opening in case of power failure without a manual lever is possible.

In both cases the springs of the balancing system are released and the door opens to a maximum height of max. 2.0 m (depending on the size).

### Bottom Profile / Flex Edge

As standard the door comes with a bottom profile made of aluminum. As option the profile is available in stainless steel. Furthermore it can also be equipped as a Flex Edge version (flexible bottom profile without aluminum extrusion and without coiled cable).

# Technical Data ASSA ABLOY RR300 Plus

| TECHNICAL DATA   |                            | ASSA ABLOY RR300 Plus   |
|--|----------------------------|---|
| Application  |                            | Interior door   |
| Door dimensions (mm)                                       |                            |   |
| DW (min. / max.) LB  |                            | 1000 / 5000 mm  |
| DH (min. / max.) LH  |                            | 1000 / 5000 mm  |
| max. area  |                            | 25 m <sup>2</sup>   |
| Open/Close max. (m/s) <sup>2)</sup>                        |                            | 2,2 / 0,9   |
| Wind resistance (EN 12424)                                 |                            | class 1<br>(Exception „Flex-Edge“)  |
| Leckage (EN 12426)   |                            | –   |
| Space requirement top / side frame                         |                            | 400–515 / 123 und 123   |
| Temperature range max. <sup>3)</sup>                       |                            | +10°C to +40°C  |
| <b>Surface material</b>                                    |                            |   |
| Side frame   |                            | <ul style="list-style-type: none"> <li>✓ Anodized aluminum</li> <li>• Stainless steel</li> <li>• Powder coated</li> </ul>                   |
| Top roll cover <sup>1)</sup>                               |                            | <ul style="list-style-type: none"> <li>• Anodized aluminum 0°</li> <li>• Powder coated steel</li> <li>• Stainless steel 0° / 30°</li> </ul> |
| Motor cover <sup>1)2)</sup>                                |                            | <ul style="list-style-type: none"> <li>✓ Plastic Grey</li> <li>• Powder coated steel</li> <li>• Stainless steel 15°</li> </ul>              |
| Bottom profile <sup>2)</sup>                               |                            | <ul style="list-style-type: none"> <li>✓ Aluminium</li> <li>• Stainless steel</li> <li>• „Flex-Edge“ (max. 4x4,2m)</li> </ul>               |
| Bottom profile with extended flexible seal                 |                            | •   |
| Lintel seal  |                            | –   |
| <b>Safety features</b>                                     |                            |   |
| Electrical safety contact edge                             |                            | ✓   |
| Signal connection with drive unit                          |                            | inside (at „Flex-Edge“ per radio)   |
| Door line photocell in side frame                          |                            | ✓   |
| light curtain (integrated) <sup>2)</sup>                   |                            | <ul style="list-style-type: none"> <li>• inside side frame</li> </ul>   |
| Crash-System at curtain/bottom profile <sup>2)</sup>       |                            | <ul style="list-style-type: none"> <li>• Spiral cable or radio</li> </ul>   |
| Curtain tension <sup>2)</sup>                              |                            | <ul style="list-style-type: none"> <li>• Tension spring (not with „Flex Edge“)</li> </ul>   |
| Emergency egress <sup>2)</sup>                             | Manual Break release lever | ✓   |
|  | Manual Hand Chain          | •   |
| Self opening in event of power outage                      |                            | •   |
| Counterbalance   |                            | Spring force  |
| Suitable for emergency exit                                |                            | no  |
| Brake type<br>(Automatic opening brake/Open Circuit Brake) |                            | <ul style="list-style-type: none"> <li>✓ Fail-safe</li> <li>• Operation current</li> </ul>  |
| <b>Drive unit</b>  |                            |   |
| Motor power  |                            | GfA 0,75 kW   |
| Chain drive (space saving) <sup>2)</sup>                   |                            | –   |
| Gear heating   |                            | •   |
| Hand chain   |                            | •   |
| <b>Control system</b>                                      |                            |   |
| MCC: Open/Close max. (m/s) <sup>2)</sup>                   |                            | 2,2 / 0,9   |
| Separate display / control                                 |                            | ✓   |
| Fuse protection by site                                    |                            | 10 A – 16 A (C-characteristic)  |
| Control voltage  |                            | 24 V DC   |
| Protection   |                            | IP55  |
| <b>Network connection</b>                                  |                            |   |
| MCC  | Standard:                  | 3L(N)/PE/380/400/415/440/480V;50/60Hz   |
|  | With transformer:          | 1L(N)/PE: 220/230V 50-60Hz (25% red. speed)   |

• Option    ✓ Standard    – not possible



**ASSA ABLOY control system**  
The MCC guarantees a soft start, optimal increase in speed, maximum speeds and a long service life of the door.



**Opening the door**  
The manual release handle enables the door to be opened easily. As an option, the door can be equipped with automatic activation.



**Knock-out capability (Crash-System)**  
The door can be equipped with a knock-out capability option.

1) DH ≤ 2 500 mm always with cover

2) Deviations possible depending on other properties

3) Depending on cycles/minute, door size and installation location. Extended temperature range on request.





Example of use

### Applications of the ASSA ABLOY RR300 Plus

- As an interior door for climate control
- For climate control and energy conservation
- In protected exterior applications
- In applications with strict hygiene requirements, the PVC curtain is easy to clean
- In distribution and warehouse applications

### Safety features

The door has an electrical safety contact edge. A standard in-line photocell prevents the door from closing when an object is in the doorway. An optional integrated light curtain is available for doors with a minimum height of 1975 mm.

The door is designed according to the Workplace Directive of the UVV regulations and the harmonized CE Guidelines including the EN 13241-1.

### Indication of risk

The safety of the door is designed for normal use and for vehicles in an industrial environment in accordance to the harmonized CE-Guidelines. In consideration of the on site situation – especially in case of pedestrian use – additional safety measures, such as additional actuators may be required. In addition, special environmental conditions may impact the choice of door type. For more information or to schedule an on-site inspection, please contact your local sales engineer.



Example of use

| Door curtain<br>(Color code according to RAL color card) | PVC with colored fabric reinforcement strips | PVC with colored fabric reinforcement strips silicone-free | RollTex® Plus<br>RollTex® Original | NomaTex®                         | Top-Door curtain 1,3 mm<br>(max. 3500 x 3500mm) |
|--|--|--|------------------------------------|----------------------------------|---|
| Windows  | -  | -  | •                                  | •                                | -   |
| Vision panels  | -  | -  | -                                  | •                                | •   |
| Wind tabs  | ✓  | ✓  | ✓                                  | ✓                                | ✓   |
| Blue   | ✓ 5002                                       | ✓ 5010   | • 5002                             | • A 5005*                        | • 5010  |
| Red  | ✓ 3002                                       | ✓ 3002   | -                                  | • 3000                           | • 3002  |
| Orange   | • 2011                                       | • 2011   | • 2009                             | • A 2009*                        |   |
| Grey   | • 7035                                       | • 7037   | • 7001                             | • A 7038<br>• 7045 <sup>1)</sup> | • 7035  |
| Yellow   | • 1021                                       | • 1021   |                                    | • 1023                           |   |
| Green  | • 6018                                       |  |                                    |                                  |   |
| Beige  | • 1014                                       |  |                                    |                                  |   |
| White  | • 9016                                       | • 9010   |                                    |                                  |   |
| Black  |  | • 9005   |                                    |                                  |   |

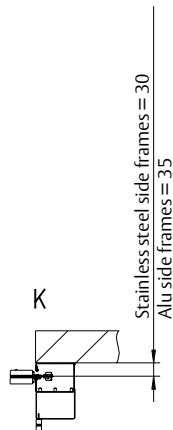
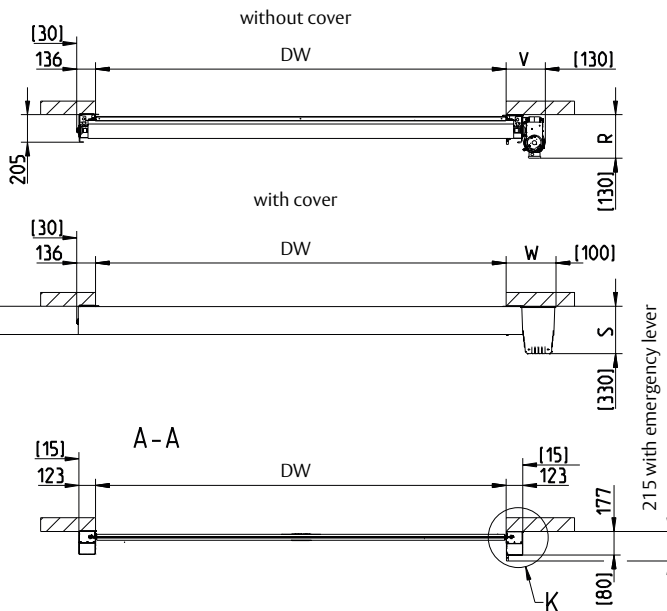
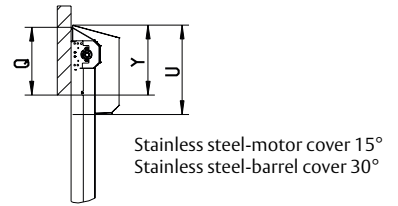
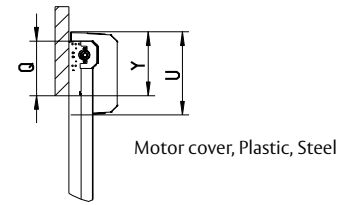
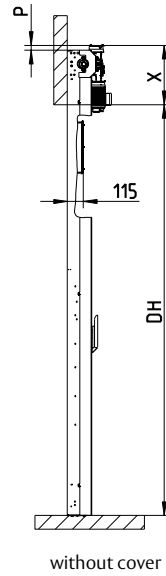
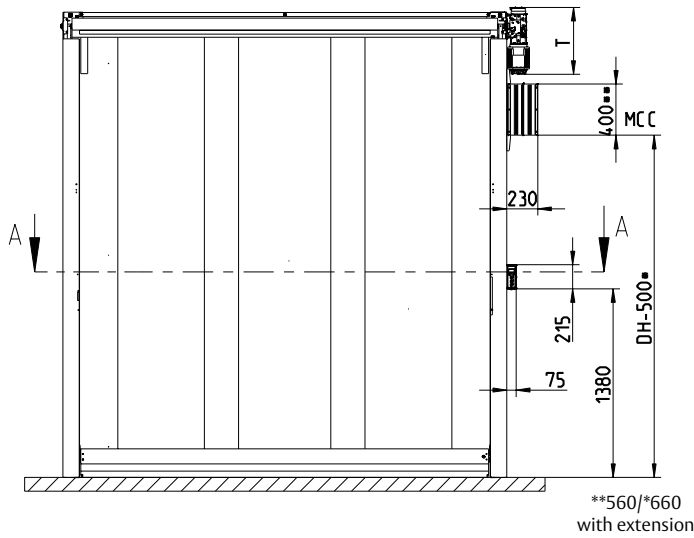
A = Antistatic properties \* = plain surface on side of top roll 1) hardly flammable



Example of use

# General drawing ASSA ABLOY RR300 Plus

223 if DW > 4000 mm or DH > 4200 mm and Alu side frames  
207 if Stainless steel side frames or DW ≤ 4000 mm and H ≤ 4200 mm



| Available sizes |      | DW              | DH   |      |
|-----------------|------|-----------------|------|------|
| Standard        | min. | 1000            | 1000 |      |
|                 |      | with Crash      | 1300 | 1000 |
| Standard        | max. | 5000            | 5000 |      |
|                 |      | FlexEdge        | 4000 | 4200 |
|                 |      | with Top 1,3 mm | 3500 | 3500 |

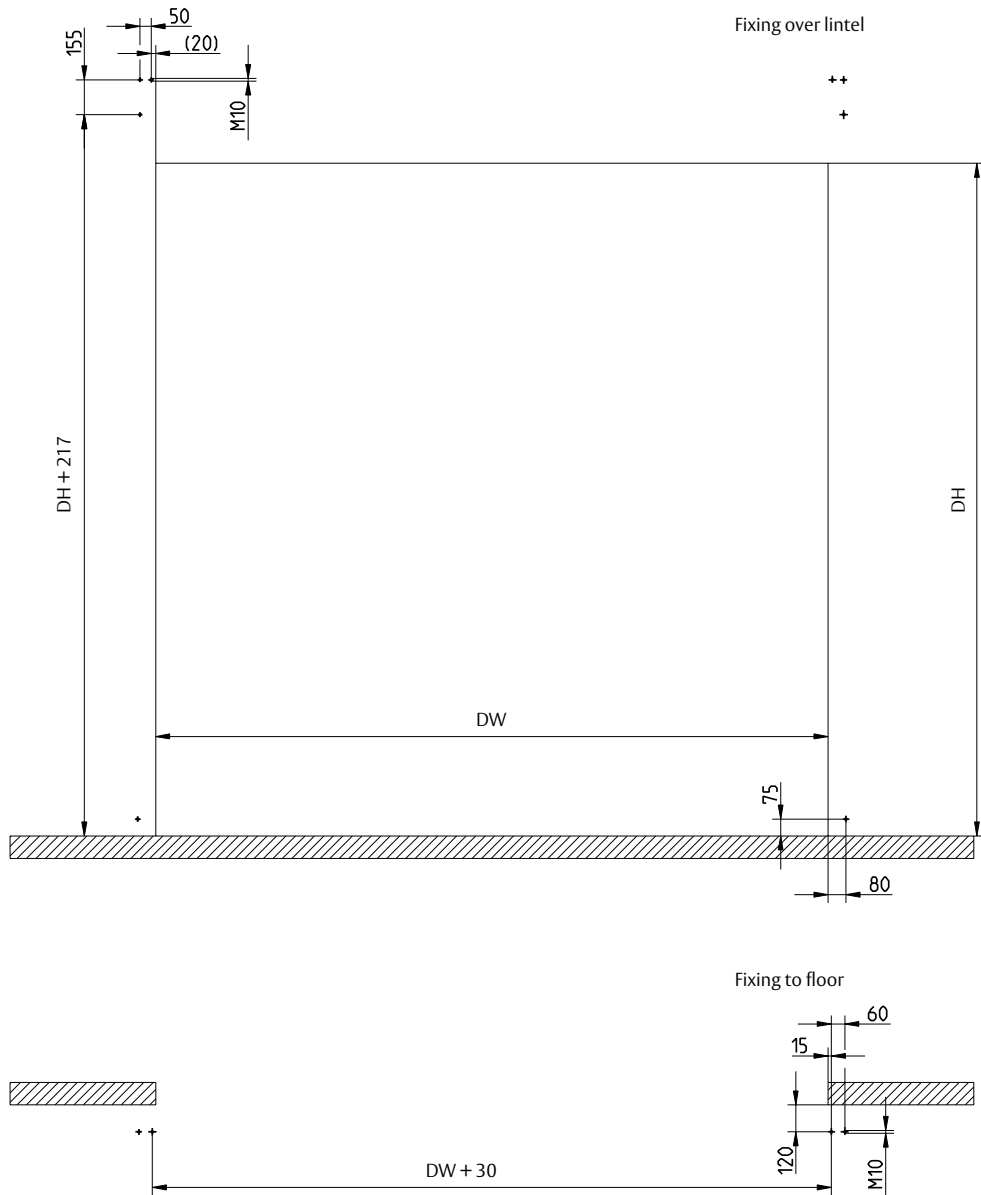
| Without motor cover |   |
|---------------------|---|
| X                   | 443   |
| V                   | 285   |
| R                   | 315, if stainless steel side frames<br>or DW ≤ 4000 and DH ≤ 4200 |
| R                   | 325, if DW > 4000 or DH > 4200 and Alu side frames                |
| T                   | 500   |
| P                   | 45  |

| With motor cover |         |       |                        |
|------------------|---------|-------|------------------------|
|                  | Plastic | Steel | Stainless steel        |
| Y                | 470     | 465   | 515                    |
| W                | 366     | 362   | 362                    |
| S                | 340     | 340   | 340                    |
| U                | 610     | 600   | 650                    |
| Q                | 400     | 400   | 497 (15°),<br>400 (0°) |

| Control Unit         |    |                 |
|----------------------|----|-----------------|
|                      |    | MCC             |
| Dimensions W × H × D | mm | 220 × 380 × 100 |

[ ] = Space needed for installation

# Fixing plan ASSA ABLOY RR300 Plus



The ASSA ABLOY Group is the global leader in access solutions. Every day, we help billions of people to experience a more open world.

**ASSA ABLOY**  
Entrance Systems

ASSA ABLOY Entrance Systems provides solutions for efficient and safe flow of goods and people. Our offering includes a wide range of automated pedestrian, industrial and residential doors, loading dock equipment, perimeter fencing and service.



© ASSA ABLOY Entrance Systems AB PL\_MAN/ASSA ABLOY RR300 Plus|de\_EN-1.1/2101 / 64 100 740 Technical data subject to change without notice

Follow us:



Please enter ASSA ABLOY Entrance in the channel's search field.