

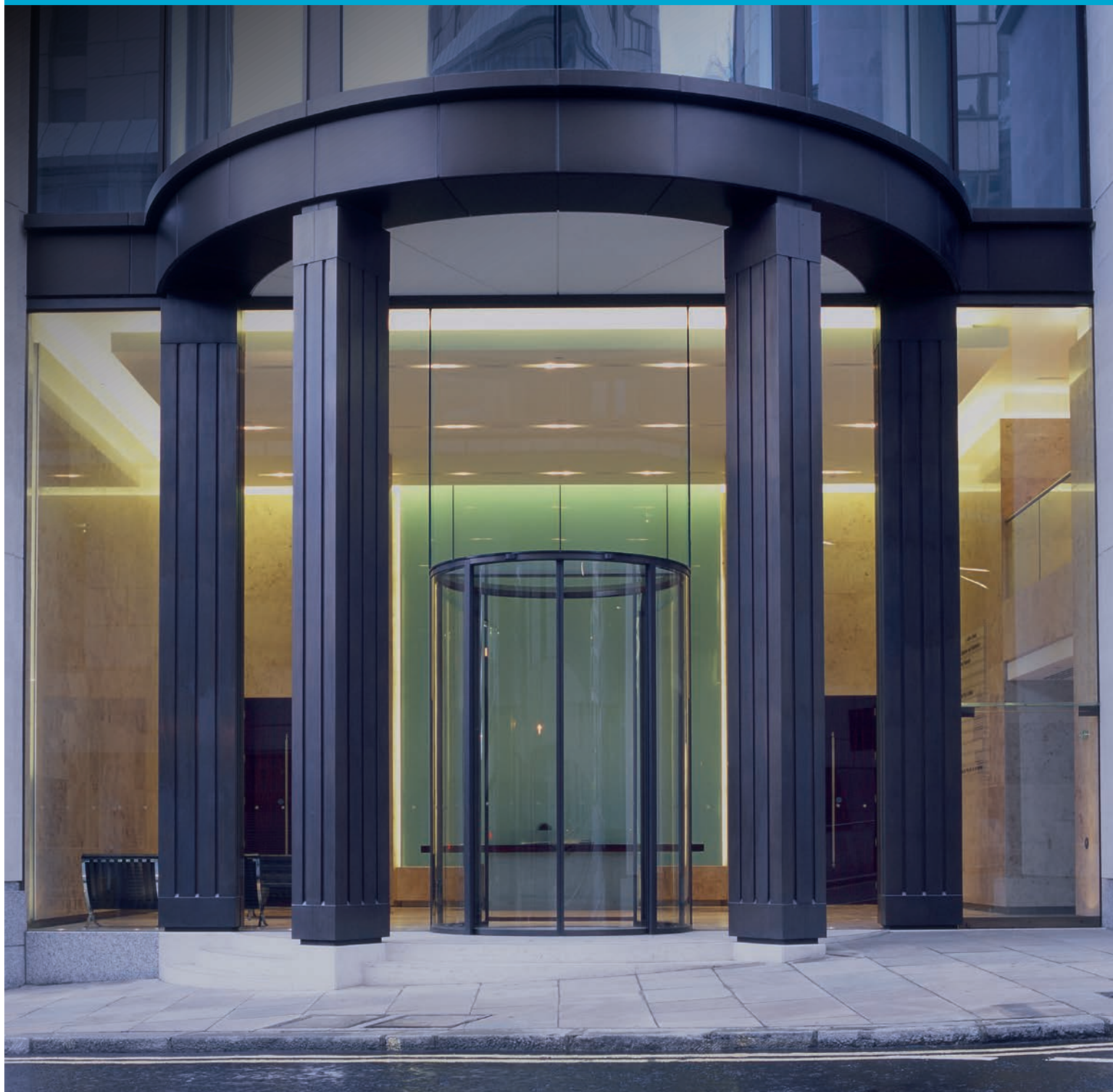
ASSA ABLOY

# Security portals MP100 and MP200

Intelligent door system that offer  
new levels of controlled access

**ASSA ABLOY**  
Entrance Systems

Experience a safer  
and more open world



# Safe. Secure. Reliable.

These qualities are crucial for meeting the evolving challenge of protecting people and environments, from securing public events to maintaining and monitoring a safe environment in key sectors and critical infrastructure.

Security Entrance Control technologies and solutions must adapt to today's rapidly changing requirements while adapting to tomorrow's unforeseen scenarios.



## Proven expertise

As a global leader in reliable entrances for more than five decades, we use our technical experience and specific application knowledge to usher in a new era of security access control solutions and services.



## Robust and high quality

Everything is a product of our global team of experienced technicians and engineers with their designed Passion for sustainable innovation. We combine highly robust materials with state-of-the-art technology designed to ensure a safe and seamless user flow.



## Safe and secure technology

Our systems have the latest security features that enable a comfortable and safe passage under all circumstances. We enable businesses to customize their entrance solutions to suit their needs for different sizes, functions, and colors.



## Global reach with local presence

We offer local maintenance and servicing, and intelligent digital solutions, making us the perfect partner for the development, deployment, and maintenance of access control systems.



### **BIM objects by ASSA ABLOY**

Working in the BIM environment provides your project teams the platform to collaborate in a single place - everyone working with the same facts, data, and visualizations from the entire life cycle. We offer our official BIM objects for our product range of automatic doors and security entrance solutions.









# New levels of controlled access

Controlled access to secure spaces has never been easier. The ASSA ABLOY MP100 and MP200 security portals are designed to control access to the most sensitive areas within your building. The interlocking door guarantees high levels of security for either external entrances, or internal access to areas where security is most critical.

The system uses sensors and triggers to verify authorisation and incorporates features which prevent tailgating and piggybacking. The portals' superior levels of functionality make them the ideal choice for any vulnerable environment where preventing unauthorised access is essential, including within financial institutions, commercial buildings, airports, Government offices and casinos.

Security doesn't have to come at the cost of convenience and the MP100 and MP200 portals guarantee fast and flexible access. Using proven technology, the system boasts one of the fastest opening and closing speeds of any security portal with a high flow rate of between five and seven people a minute.

The system is also designed to accommodate authorised personnel with a range of mobility needs and the comfortable and spacious compartment offers barrier free access to wheelchairs, pushchairs and those carrying equipment.

Our complete Security Entrance Control portfolio covers any need. We offer a flexible range of entrance doors to handle all physical access control requirements: from Access-Controlled Revolving Doors to Security Portals, Airport Exit Lanes, and Breach Controls.

# Taking control of your entrances

When you buy a solution from ASSA ABLOY Entrance Systems, you'll get more than just a physical product. You'll also get the dedication, experience and expertise of our world-class technicians and engineers. A team dedicated to paying attention to every little detail.

The ASSA ABLOY MP100 and MP200 security portals can be adapted to meet a range of requirements. The individually selectable security settings mean the system can respond to changing needs whilst ensuring safe and secure access to authorised personnel.

Access clearance takes place at the front of the portal either manually by security staff or automatically via a card reader or fingerprint sensor. Inside the compartment further checks are made with the use of technology including pressure contact mats and 3D cameras. The integrated control system evaluates sensors before permitting access.

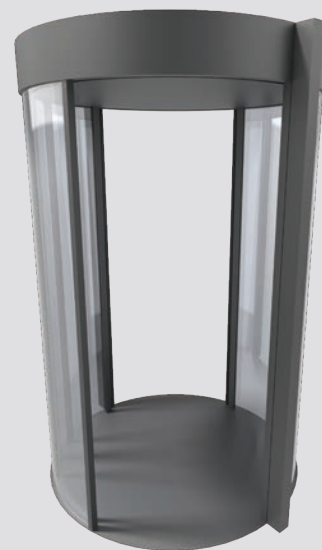
## Users have the choice of four security levels:

- **Superior:** Access only via access control systems plus time-of-flight 3D camera and contact mat for monitoring of entrances and exits.
- **High:** Access only via access control system plus time-of-flight 3D camera for monitoring piggybacking attempts.
- **Medium:** Access only via access control system plus contact mat and presence sensors.
- **Low:** Access only via control system plus presence sensors.

MP100



MP200



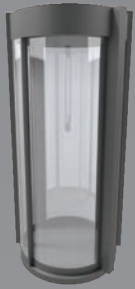
# Features / Comparison

Feature	MP100	MP200
Dimensions	3 standard fixed diameters	Customizable
Width of passage A (in.)	23.62 / 35.43 / 43.30	39.56 -63.74
Door leaf	1 door leaf	2 door leaves
People flow rate	4 -- 6	5 -- 7
UL Certification	YES	UL ready / field inspection
Wheelchair accessibility	available (A) >35.43 in.	Complete range
Access control biometrics	✓	✓
Anti-tailgating (contact mat)	✓	✓
Anti-piggybacking (TOF-3D sensor)	✓	✓
Tailgating and Piggybacking (contact mat + TOF-3D sensor)	No	✓
Burglary resistance class	No	RC2 + RC3



# Intelligent door system provides new levels of controlled access

MP100



## ASSA ABLOY MP100

We have developed and designed our security portal ASSA ABLOY MP100 to offer and provide you and your employees increased security and additional measures for vulnerable and particularly protected areas in banks, datacentres, office buildings, airports, and other sensitive applications.

The MP100 separates pedestrian traffic in your building or secured area using sensors and triggers that only activate the exit route when the entering person meets the required parameters. You can implement a range of security levels, allowing passage only when predefined conditions are met. These measures prevent so-called tailgating and piggybacking behaviors.







### Security

Access control biometrics	✓
Anti-tailgating (contact mat)	✓
Anti-piggybacking (TOF-3D sensor)	✓
Tailgating and Piggybacking (contact mat + TOF-3D sensor)	No
Burglary resistance class	No



### Specifications

Dimensions	3 fixed diameters
Outer diameter Q (in.)	40.75 / 57.28 / 68.30
Width of passage A (in.)	23.62 / 35.43 / 43.30
Canopy height (in.)	8.66 - 39.37
Height of passage G (in.)	82.67 - 118.11
Door leaf	1 door leaf
People flow rate	4 -- 6
UL Certification	✓
Wheelchair accessibility	Available (A) >35.43 in.



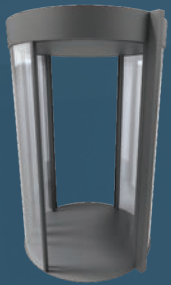
### Certifications

EU machinery directive / EU safety (CE mark)	✓ / PLC
Escape route	N / A



**MP200**

High security entrances that offer the best prevention to prevent intrusion.



## **ASSA ABLOY MP200**

The ASSA ABLOY MP200 security portal is designed to control access to the most secure and sensitive areas within your building. The 2-wing interlocking security door guarantees high levels of security for either external entrances, or internal access to areas where security is most critical.

When security is critical, high-security portals have proven their worth to prevent intrusion. Security portals support regulatory compliance and reduce your business's risk and liability when equipped with biometric and access control devices.

The MP200 portal's superior levels of functionality mean it is the ideal choice for any environment where preventing unauthorised access is critical, including within financial institutions, commercial buildings, airports, Government offices and casinos.





## Product feature video

Check out our latest product video, where we explain all the features in an easy-to-understand way using example situations so that you can find the right solution for your needs.



### Security

Access control biometrics  
Anti-tailgating (contact mat)  
Anti-piggybacking (TOF-3D sensor)  
Tailgating and Piggybacking  
(contact mat + TOF-3D sensor)  
Burglary resistance class



RC 2 / RC 3



### Specifications

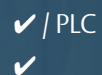
Dimensions  
Outer diameter Q (in.)  
Width of passage A (in.)  
Canopy height (in.)  
Height of passage G (in.)  
Door leaf  
People flow rate  
UL Certification  
Wheelchair accessibility

Customizable  
63-98.43  
39.56-63.74  
9.84 - 39.37  
86.61 - 98.43  
2 door leaves  
5 -- 7  
UL ready / field inspection  
Complete range



### Certifications

EU machinery directive / EU safety (CE mark)  
Escape route



# Options and Connections

At ASSA ABLOY, we offer a the best possible adaptation to your structural conditions and safety-relevant requirements to accomodate both high security as well as high people flow.



## Options

- Additional operating mode “Cleaning”
- Additional operating mode “Maintenance”
- Flashing light (display of various alarm messages)
- Voice module (instructions for the user via loudspeaker)
- Anodized coating of the aluminium parts (except ceiling panels)
- Door and drum wall glass in thickness and design such as laminated safety glass, insulating glass, P4A or P5A selectable
- Panel walls (fixed, movable, also combined) for opaque protection
- Weather protection bonnet for outdoor applications
- Safety package with optical sensors and vertical photoelectric proximity switches for non-contact safety of the closing edges
- Traffic light display safe side inside / outside. Traffic light display public side inside / outside
- Mechanical manual release optionally with motor release for manual sliding open or with automatic opening of the door
- Contacts potential-free (monitoring of door position for on-site alarm system)



## Connection options

- The following connections are available as permanently assigned potential-free inputs:
  - Lockdown (emergency opening i.e. system goes into safe state one door locks the other door opens)
  - Total Opening (emergency opening both doors)
- Open access door (e.g. via code, card reader, on-site push-buttons, etc.)
- SuperUser (e.g. via code, card reader, on-site buttons, etc.)
- Connection for i-Record programming device (iPort)
- 2 connections for service flap switches (monitoring of the service flaps)
- Optionally, 16 status signals are also available - this allows various parameters to be transmitted to a building management system.
- Connection to building management systems
- For complete integration into new or existing building management systems, the ASSA ABLOY security interlock has numerous freely configurable connection options.

### The following can be queried:

- Operating mode
- Fault reports
- General status of the lock

This makes it possible, for example, to realise an operating time control: The flow of people and the protection of the building are individually configured via various parameters and operating modes. During regular working hours, the focus can thus be on maximum people flow, while during off-peak hours, building protection with restrictive access limitations prevails. A suitable access control system can also be used to define individual and person-related access authorisations. The type of identification (card reader, fingerprint, iris scanner, key, etc.) can also be freely selected.



# Integration

The security portal system can be tailored to meet specific requirements and configured to work alongside existing security and building features. This includes integration with a RFID reader, fingerprint, vein or iris scanner, or face recognition, to identify and authenticate users. It also works in conjunction with smart devices, such as i-record, for quick and easy door-commissioning and trouble shooting. It can be connected to an existing Building Management System for which up to 16 relay outputs are optionally available.

## Additional benefits

### Added protection

Certified to EN 1627 class RC 2 and RC 3, the security door provides effective protection against burglar attacks.

### Smart detection

Access controls can be integrated to prevent tailgating and piggybacking.

### Clear signals

Authentication is visually communicated via an LED traffic light system.

### Fully customised

The system can be tailored to the needs of the user through bespoke manufacture. The portal is available in stainless steel, powder-coated aluminium, or anodized aluminium.

The glazing is available in different thicknesses and designs and in addition, there is a choice of diameter and RC 2 or RC 3 approval.

### Cost saving

The door system reduces the need for security staff, ensuring a quick return on investment.



# Essential service and beyond


Regular maintenance is essential to ensure the MP100 and MP200 door systems functioning at the highest level whilst complying with safety regulations. Maintenance is not carried out automatically during the warranty period and it is recommended that customers sign a maintenance agreement within six months of installation to provide peace of mind and help reduce operating and maintenance costs over the life of the product.

The ASSA ABLOY MP100 and MP200 security portals are manufactured to the highest quality standards and if maintained correctly will last decades, providing trouble free secure access to sensitive and vulnerable areas.

Our service technicians are available to respond to any queries. In the event of a malfunction of your automatic door, our schedulers will immediately organise an appointment with a nearby service technician. Our intuitive service app can be installed on tablets and mobile devices to support technician during service and maintenance work. With a user-friendly interface and downloadable updates, the app facilitates rapid troubleshooting, and the help function allows users to request remote support if required.







# How we support you

## Service Agreements

**Flexible service packages:**  
Our variety of service packages allow for greater flexibility and tailored solutions.

**Local compliance:**  
Our service checks and maintenance programs always follow local compliance.

**Planned maintenance:**  
We will make sure to schedule regular service visits and replace old components when needed.

**Safety and quality checks:**  
All packages include safety, compliance and quality control checks.

## Modernization and upgrades

**Extending lifetime:**  
We can extend the lifetime of entrance systems while also making them more sustainable.

**Reduction of energy costs:**  
We increase energy savings.

**Changing needs:**  
We can adjust your entrance system where needed for optimal functionality and the newest technology.

**Meeting norms:**  
We will ensure you meet current and future needs, standards and safety regulations.

**Improving performance level:**  
We can optimize performance workflow, convenience and accessibility.

## Emergency calls

**Fast response:**  
In the event of unplanned downtime, our local presence ensures a fast response.

**First-time fixes:**  
With a large spare parts inventory and solid team of technicians, we can fix any issues in one visit – with long-term results.

**24/7 priority service:**  
We will make it possible for you to easily view your service history as well as any upcoming service appointments.

**Original spare parts:**  
We will always provide original spare parts as a part of our services.

**Service all doors:**  
Our technicians are able to service all doors and docking regardless of brand.

## How else we can support you

**Digital & connected technology:**  
With our digital offerings, get access to real-time data, analytics and a full-service overview to improve brand transparency.

**Technical documentation:**  
We have defined procedures and specifications for servicing of all your doors and will provide you a full overview.

**Budgeting:**  
Our full-service package means you can plan and budget your costs on an annual basis – with no surprises along the way.

**Training:**  
We offer free online courses and sessions so your staff can get to know their ASSA ABLOY systems inside and out.

The ASSA ABLOY Group is the global leader in access solutions. Every day, we help billions of people experience a more open world.

ASSA ABLOY Entrance Systems provides solutions for efficient and safe flow of goods and people. Our offering includes a wide range of automated pedestrian, industrial and residential doors, loading dock equipment, perimeter fencing and service.

**ASSA ABLOY**  
Entrance Systems

ASSA ABLOY Entrance Systems

704-290-5551

securitycontrol.na.entrance@assaabloy.com  
assaabloyentrance.us • assaabloyentrance.ca

Follow us:



Please enter ASSA ABLOY Entrance in the channel's search field.